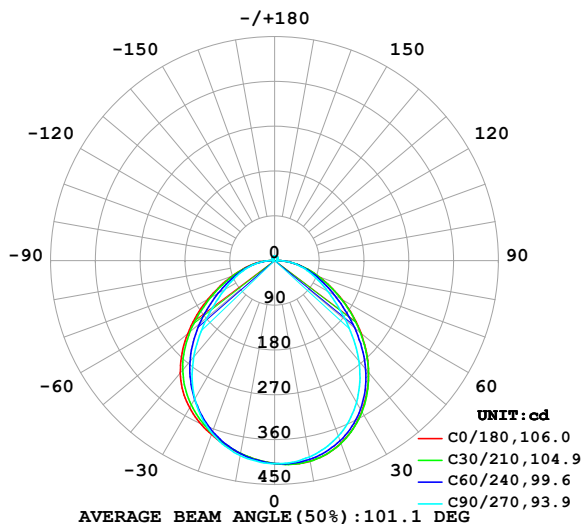


LUMINAIRE PHOTOMETRIC TEST REPORT

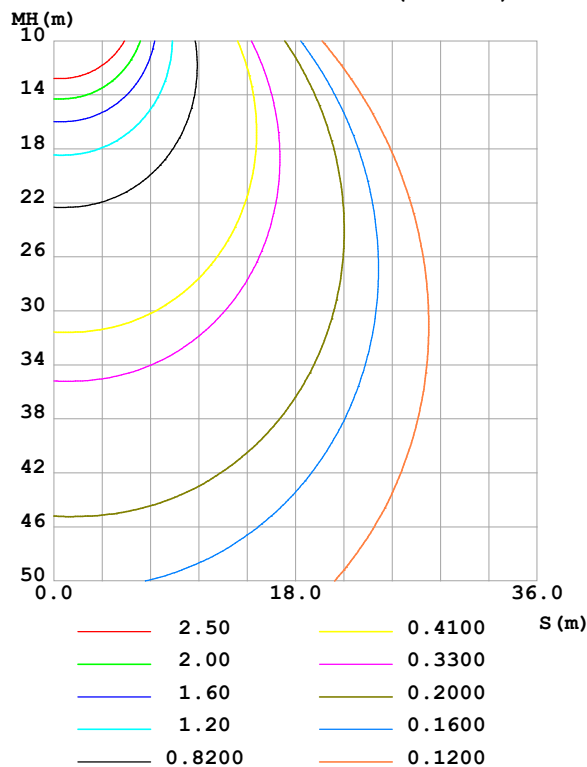
Test:U:24.000V I:0.4257A P:10.217W PF:1.0000 Freq:0Hz Lamp Flux:1098.66x1 lm		
NAME: SP01-24V-2835-120-3000-80	TYPE:	WEIGHT:
SPEC.:	DIM.: Length=1m	SERIAL No.:
MFR.:	SUR.:	Shielding Angle:

DATA OF LAMP		PHOTOMETRIC DATA Eff: 107.53 lm/W			
MODEL		Imax (cd)	411.2	S/MH(C0/180)	1.25
NOMINAL POWER(W)		LOR(%)	100.0	S/MH(C90/270)	1.18
RATED VOLTAGE(V)		TOTAL FLUX(lm)	1098.7	η UP,DN(C0-180)	1.9,48.9
NOMINAL FLUX(lm)	1098.66	CIE CLASS	DIRECT	η UP,DN(C180-360)	1.7,47.6
LAMPS INSIDE	1	η up (%)	3.5	CIBSE SHR NOM	1.25
TEST VOLTAGE(V)		η down (%)	96.5	CIBSE SHR MAX	1.35

LUMINOUS INTENSITY DISTRIBUTION DIAGRAM



C0 PLANE ISOLUX DIAGRAM (UNIT:lx)



C Range: 0 - 360DEG
C Interval: 30.0DEG
Test Speed: HIGH
Temperature: 25.3 °C
Operators: Cloud
Test Date: 2024-09-27

γ Range: 0 - 180DEG
 γ Interval: 1.0DEG
Test System: EVERFINE GO-2000B_V1 SYSTEM V2.00.488
Humidity: 65.0%
Test Distance: 6.360m [K=1.0000]
Remarks:

ZONAL FLUX DIAGRAM

ZONAL FLUX DIAGRAM:

γ	C0	C45	C90	C135	C180	C225	C270	C315	γ	Φ zone	Φ total	%lum, lamp
10	409.5	407.5	401.0	395.7	394.0	393.6	397.6	405.7	0- 10	38.59	38.59	3.51,3.51
20	390.4	388.0	375.0	370.8	372.1	367.2	369.2	385.1	10- 20	110.3	148.9	13.6,13.6
30	350.4	348.2	329.2	333.3	341.7	328.5	321.2	343.8	20- 30	165.5	314.4	28.6,28.6
40	293.8	289.2	263.3	281.9	295.1	276.2	253.2	283.5	30- 40	194.3	508.7	46.3,46.3
50	226.6	217.5	186.5	215.6	228.1	209.3	176.3	211.1	40- 50	189.8	698.5	63.6,63.6
60	156.2	146.9	123.1	145.2	153.9	139.8	115.7	141.6	50- 60	156.4	854.9	77.8,77.8
70	94.64	90.36	79.41	87.98	90.36	83.98	74.11	86.69	60- 70	111.3	966.3	88,88
80	45.79	46.43	43.79	44.85	43.87	41.45	38.94	43.59	70- 80	68.01	1034	94.1,94.1
90	6.414	6.607	5.957	6.514	6.592	4.955	3.618	4.792	80- 90	25.87	1060	96.5,96.5
100	4.549	4.865	5.237	4.814	4.173	4.231	4.161	4.167	90-100	4.815	1065	96.9,96.9
110	5.333	5.640	5.980	5.613	4.839	4.925	4.777	4.863	100-110	5.164	1070	97.4,97.4
120	6.091	6.385	6.659	6.376	5.557	5.616	5.473	5.534	110-120	5.566	1076	97.9,97.9
130	6.794	7.053	7.307	7.045	6.263	6.294	6.181	6.203	120-130	5.654	1081	98.4,98.4
140	7.411	7.593	7.829	7.636	6.937	6.968	6.944	6.855	130-140	5.383	1087	98.9,98.9
150	8.016	8.092	8.283	8.199	7.629	7.666	7.644	7.562	140-150	4.750	1091	99.3,99.3
160	8.665	8.643	8.780	8.750	8.332	8.385	8.369	8.320	150-160	3.790	1095	99.7,99.7
170	9.149	9.159	9.243	9.209	8.997	9.044	9.063	8.991	160-170	2.494	1098	99.9,99.9
180	9.406	9.425	9.468	9.420	9.400	9.415	9.465	9.416	170-180	0.8822	1099	100,100
DEG	LUMINOUS INTENSITY:cd									UNIT:lm		

Conical surface Flux(90deg): 606.28 lm

%lum = 55.2%

%lamp = 55.2%

Conical surface Flux(130deg): 916.28 lm

%lum = 83.4%

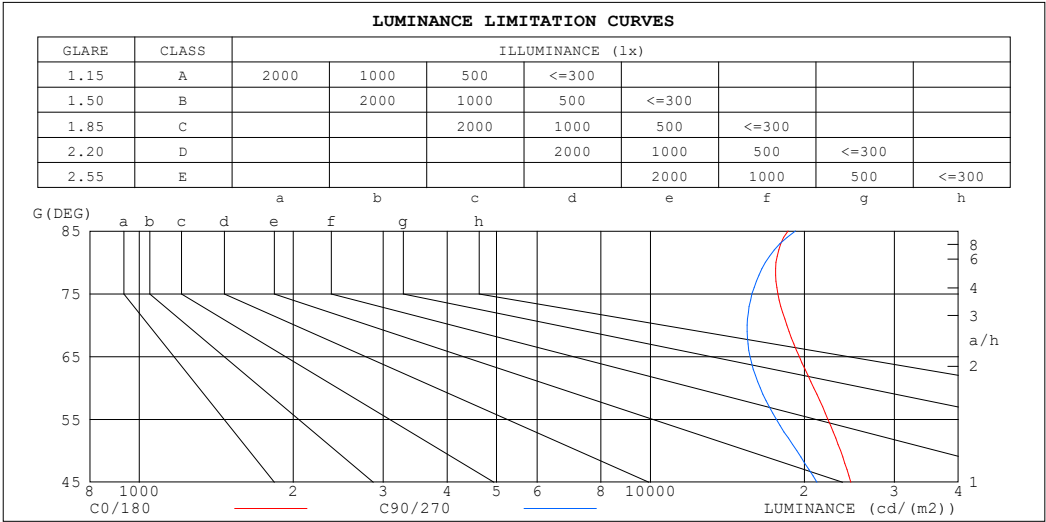
%lamp = 83.4%

C Range: 0 - 360DEG
 C Interval: 30.0DEG
 Test Speed: HIGH
 Temperature:25.3℃
 Operators:Cloud
 Test Date:2024-09-27

γ Range: 0 - 180DEG
 γ Interval: 1.0DEG
 Test System:EVERFINE GO-2000B_V1 SYSTEM V2.00.488
 Humidity:65.0%
 Test Distance:6.360m [K=1.0000]
 Remarks:

LUMINANCE LIMITATION CURVES

Test:U:24.000V I:0.4257A P:10.217W PF:1.0000 Freq:0Hz Lamp Flux:1098.66x1 lm		
NAME: SP01-24V-2835-120-3000-80	TYPE:	WEIGHT:
SPEC.:	DIM.: Length=1m	SERIAL No.:
MFR.:	SUR.:	Shielding Angle:



LUMINANCE cd/(m2)		
G (DEG)	C0/180	C90/270
85	18578	19208
80	17606	16790
75	17745	15800
70	18475	15458
65	19554	15650
60	20865	16388
55	22238	17619
50	23538	19316
45	24640	21175

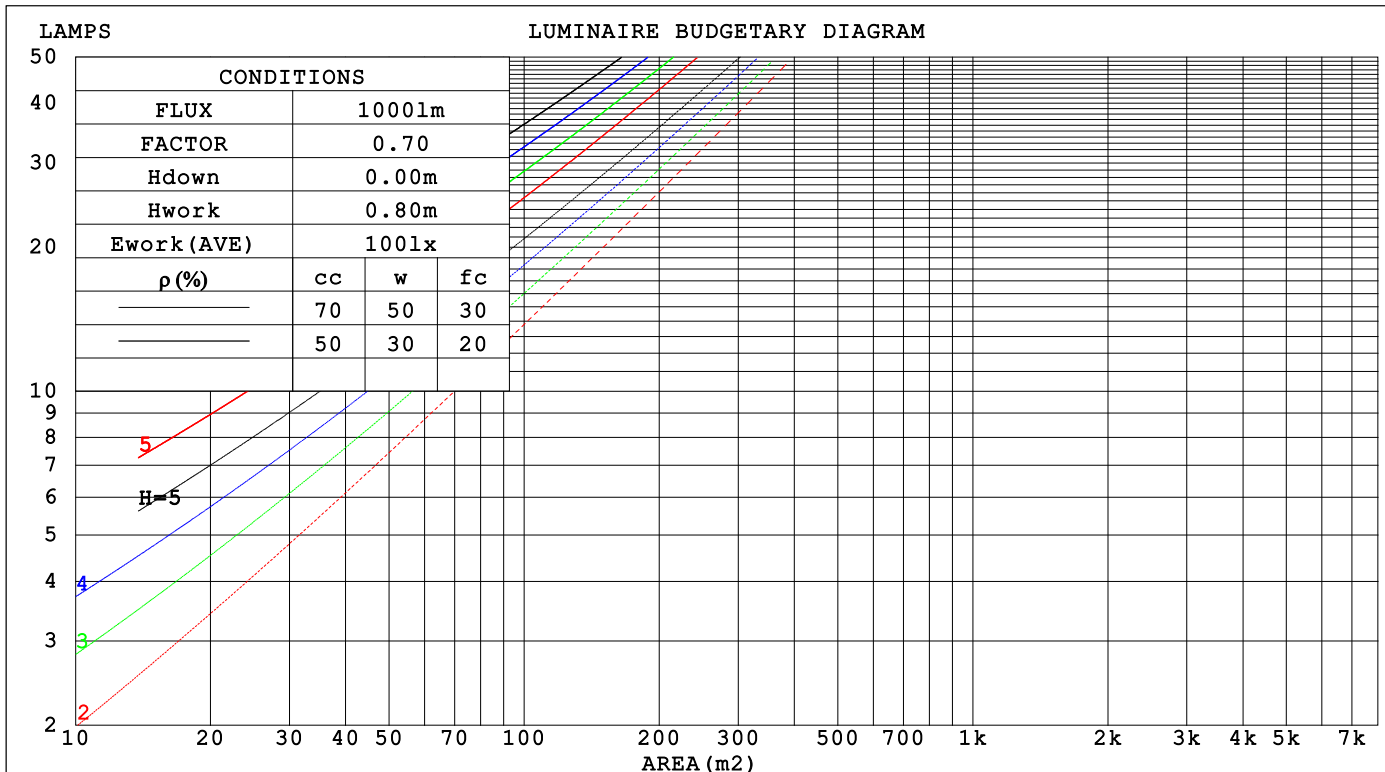
C Range: 0 - 360DEG
C Interval: 30.0DEG
Test Speed: HIGH
Temperature:25.3℃
Operators:Cloud
Test Date:2024-09-27

γ Range: 0 - 180DEG
γ Interval: 1.0DEG
Test System:EVERFINE GO-2000B_V1 SYSTEM V2.00.488
Humidity:65.0%
Test Distance:6.360m [K=1.0000]
Remarks:

CU AND LUMINAIRE BUDGETARY ESTIMATE DIAGRAM

Test:U:24.000V I:0.4257A P:10.217W PF:1.0000 Freq:0Hz Lamp Flux:1098.66x1 lm		
NAME: SP01-24V-2835-120-3000-80	TYPE:	WEIGHT:
SPEC.:	DIM.: Length=1m	SERIAL No.:
MFR.:	SUR.:	Shielding Angle:

pcc	80%			70%			50%			30%			10%			0
pw	50%	30%	10%	50%	30%	10%	50%	30%	10%	50%	30%	10%	50%	30%	10%	0
pfc	20%			20%			20%			20%			20%			0
RCR	RCR:Room Cavity Ratio Coefficients of Utilization(CU)															
0.0	1.18	1.18	1.18	1.15	1.15	1.15	1.09	1.09	1.09	1.04	1.04	1.04	.99	.99	.99	.96
1.0	1.03	.99	.95	1.01	.97	.93	.96	.93	.90	.91	.89	.86	.87	.85	.83	.81
2.0	.91	.84	.78	.88	.82	.77	.84	.79	.75	.80	.76	.72	.77	.73	.70	.68
3.0	.80	.72	.66	.78	.71	.65	.75	.68	.63	.71	.66	.62	.68	.64	.60	.58
4.0	.71	.62	.56	.69	.61	.55	.67	.60	.54	.64	.58	.53	.61	.56	.52	.50
5.0	.64	.55	.48	.62	.54	.48	.60	.53	.47	.58	.51	.46	.55	.50	.45	.43
6.0	.57	.49	.42	.56	.48	.42	.54	.47	.41	.52	.46	.41	.50	.45	.40	.38
7.0	.52	.44	.38	.51	.43	.37	.49	.42	.37	.48	.41	.36	.46	.40	.36	.34
8.0	.48	.39	.34	.47	.39	.33	.45	.38	.33	.44	.37	.33	.42	.37	.32	.30
9.0	.44	.36	.30	.43	.35	.30	.42	.35	.30	.40	.34	.30	.39	.33	.29	.27
10.0	.41	.33	.28	.40	.32	.27	.39	.32	.27	.37	.31	.27	.36	.31	.27	.25



C Range: 0 - 360DEG
C Interval: 30.0DEG
Test Speed: HIGH
Temperature:25.3℃
Operators:Cloud
Test Date:2024-09-27

γ Range: 0 - 180DEG
γ Interval: 1.0DEG
Test System:EVERFINE GO-2000B_V1 SYSTEM V2.00.488
Humidity:65.0%
Test Distance:6.360m [K=1.0000]
Remarks:

WEC AND CCEC

Test:U:24.000V I:0.4257A P:10.217W PF:1.0000 Freq:0Hz Lamp Flux:1098.66x1 lm		
NAME: SP01-24V-2835-120-3000-80	TYPE:	WEIGHT:
SPEC.:	DIM.: Length=1m	SERIAL No.:
MFR.:	SUR.:	Shielding Angle:

pcc	80%			70%			50%			30%			10%			0	
pw	50%	30%	10%	50%	30%	10%	50%	30%	10%	50%	30%	10%	50%	30%	10%	0	
pfc	20%			20%			20%			20%			20%			0	
RCR	RCR:Room Cavity Ratio						Wall Exitance Coefficients(WEC)										
0.0																	
1.0	.304	.173	.055	.296	.169	.054	.280	.161	.051	.266	.154	.049	.253	.147	.047		
2.0	.283	.155	.048	.276	.152	.047	.262	.146	.045	.250	.140	.044	.239	.135	.043		
3.0	.261	.139	.042	.255	.137	.041	.243	.132	.040	.232	.127	.039	.222	.123	.038		
4.0	.241	.125	.037	.236	.123	.036	.225	.119	.036	.215	.116	.035	.206	.112	.034		
5.0	.224	.114	.033	.219	.112	.033	.209	.109	.032	.200	.106	.031	.192	.102	.031		
6.0	.208	.104	.030	.203	.103	.030	.195	.100	.029	.187	.097	.029	.179	.094	.028		
7.0	.194	.096	.027	.190	.094	.027	.182	.092	.026	.175	.090	.026	.168	.087	.026		
8.0	.181	.088	.025	.177	.087	.025	.170	.085	.024	.164	.083	.024	.158	.081	.024		
9.0	.170	.082	.023	.167	.081	.023	.160	.079	.022	.154	.077	.022	.149	.076	.022		
10.0	.160	.077	.021	.157	.076	.021	.151	.074	.021	.146	.072	.021	.141	.071	.020		

pcc	80%			70%			50%			30%			10%			0	
pw	50%	30%	10%	50%	30%	10%	50%	30%	10%	50%	30%	10%	50%	30%	10%	0	
pfc	20%			20%			20%			20%			20%			0	
RCR	RCR:Room Cavity Ratio						Ceiling Cavity Exitance Coefficients (CCEC)										
0.0	.217	.217	.217	.186	.186	.186	.127	.127	.127	.073	.073	.073	.023	.023	.023		
1.0	.207	.183	.162	.177	.157	.139	.121	.108	.096	.070	.063	.056	.022	.020	.018		
2.0	.198	.159	.126	.170	.137	.109	.116	.095	.076	.067	.055	.045	.022	.018	.015		
3.0	.190	.141	.103	.163	.122	.089	.112	.085	.062	.065	.050	.037	.021	.016	.012		
4.0	.182	.128	.087	.156	.111	.075	.108	.077	.053	.062	.045	.031	.020	.015	.010		
5.0	.175	.118	.076	.150	.102	.066	.103	.071	.046	.060	.042	.028	.019	.014	.009		
6.0	.168	.109	.068	.144	.095	.059	.099	.066	.042	.058	.039	.025	.019	.013	.008		
7.0	.161	.103	.062	.139	.089	.054	.096	.062	.038	.056	.037	.023	.018	.012	.007		
8.0	.155	.097	.057	.133	.084	.050	.092	.059	.035	.054	.035	.021	.017	.011	.007		
9.0	.149	.092	.053	.128	.080	.047	.089	.056	.033	.052	.033	.020	.017	.011	.007		
10.0	.143	.088	.051	.123	.076	.044	.086	.054	.031	.050	.032	.019	.016	.010	.006		

C Range: 0 - 360DEG
C Interval: 30.0DEG
Test Speed: HIGH
Temperature:25.3℃
Operators:Cloud
Test Date:2024-09-27

γ Range: 0 - 180DEG
γ Interval: 1.0DEG
Test System:EVERFINE GO-2000B_V1 SYSTEM V2.00.488
Humidity:65.0%
Test Distance:6.360m [K=1.0000]
Remarks:

UGR(Unified Glare Rating) Table

Test:U:24.000V I:0.4257A P:10.217W PF:1.0000 Freq:0Hz Lamp Flux:1098.66x1 lm											
NAME: SP01-24V-2835-120-3000-80					TYPE:			WEIGHT:			
SPEC.:					DIM.: Length=1m			SERIAL No.:			
MFR.:					SUR.:			Shielding Angle:			
ceiling/cavity	0.7	0.7	0.5	0.5	0.3	0.7	0.7	0.5	0.5	0.3	
walls	0.5	0.3	0.5	0.3	0.3	0.5	0.3	0.5	0.3	0.3	
working plane	0.2	0.2	0.2	0.2	0.2	0.2	0.2	0.2	0.2	0.2	
Room dimensions		Viewed crosswise					Viewed endwise				
x = 2H y = 2H	23.1	24.5	23.4	24.8	25.0	22.2	23.6	22.5	23.9	24.2	
	3H	24.4	25.8	24.8	26.0	26.4	23.5	24.8	23.8	25.1	25.4
	4H	25.0	26.3	25.4	26.6	26.9	24.1	25.4	24.5	25.7	26.0
	6H	25.5	26.7	25.9	27.0	27.4	24.7	25.9	25.1	26.2	26.5
	8H	25.7	26.9	26.1	27.2	27.6	24.9	26.1	25.3	26.4	26.8
	12H	25.9	27.0	26.3	27.3	27.7	25.2	26.3	25.6	26.6	27.0
4H	2H	23.5	24.8	23.9	25.1	25.4	22.8	24.1	23.2	24.4	24.7
	3H	25.1	26.2	25.5	26.6	26.9	24.3	25.4	24.7	25.8	26.2
	4H	25.9	26.8	26.3	27.2	27.6	25.1	26.1	25.5	26.5	26.9
	6H	26.5	27.4	27.0	27.8	28.2	25.8	26.7	26.3	27.1	27.6
	8H	26.8	27.6	27.2	28.0	28.5	26.2	27.0	26.6	27.4	27.9
	12H	27.0	27.8	27.5	28.2	28.7	26.5	27.2	26.9	27.7	28.1
8H	4H	26.1	26.9	26.6	27.4	27.8	25.5	26.3	25.9	26.7	27.2
	6H	27.0	27.6	27.4	28.1	28.6	26.4	27.1	26.9	27.5	28.0
	8H	27.3	28.0	27.9	28.4	29.0	26.8	27.4	27.3	27.9	28.5
	12H	27.7	28.2	28.2	28.7	29.3	27.3	27.8	27.8	28.3	28.8
12H	4H	26.1	26.9	26.6	27.3	27.8	25.5	26.3	26.0	26.7	27.2
	6H	27.0	27.6	27.6	28.1	28.7	26.5	27.1	27.0	27.6	28.1
	8H	27.5	28.0	28.0	28.5	29.1	27.0	27.5	27.5	28.0	28.6
Variations with the observer position at spacings(CIE Pub.117):											
S = 1.0H		+ 0.2 / - 0.2					+ 0.2 / - 0.2				
1.5H		+ 0.2 / - 0.3					+ 0.2 / - 0.3				
2.0H		+ 0.2 / - 0.3					+ 0.2 / - 0.4				

CIE Pub.117, 1099 lm Total Lamp Luminous Flux Correct (8log(F/F0) = 0.3)
Area: 0.015 m2

C Range: 0 - 360DEG
C Interval: 30.0DEG
Test Speed: HIGH
Temperature:25.3℃
Operators:Cloud
Test Date:2024-09-27

γ Range: 0 - 180DEG
γ Interval: 1.0DEG
Test System:EVERFINE GO-2000B_V1 SYSTEM V2.00.488
Humidity:65.0%
Test Distance:6.360m [K=1.0000]
Remarks:

UTILIZATION FACTORS TABLE

Test:U:24.000V I:0.4257A P:10.217W PF:1.0000 Freq:0Hz Lamp Flux:1098.66x1 lm		
NAME: SP01-24V-2835-120-3000-80	TYPE:	WEIGHT:
SPEC.:	DIM.: Length=1m	SERIAL No.:
MFR.:	SUR.:	Shielding Angle:

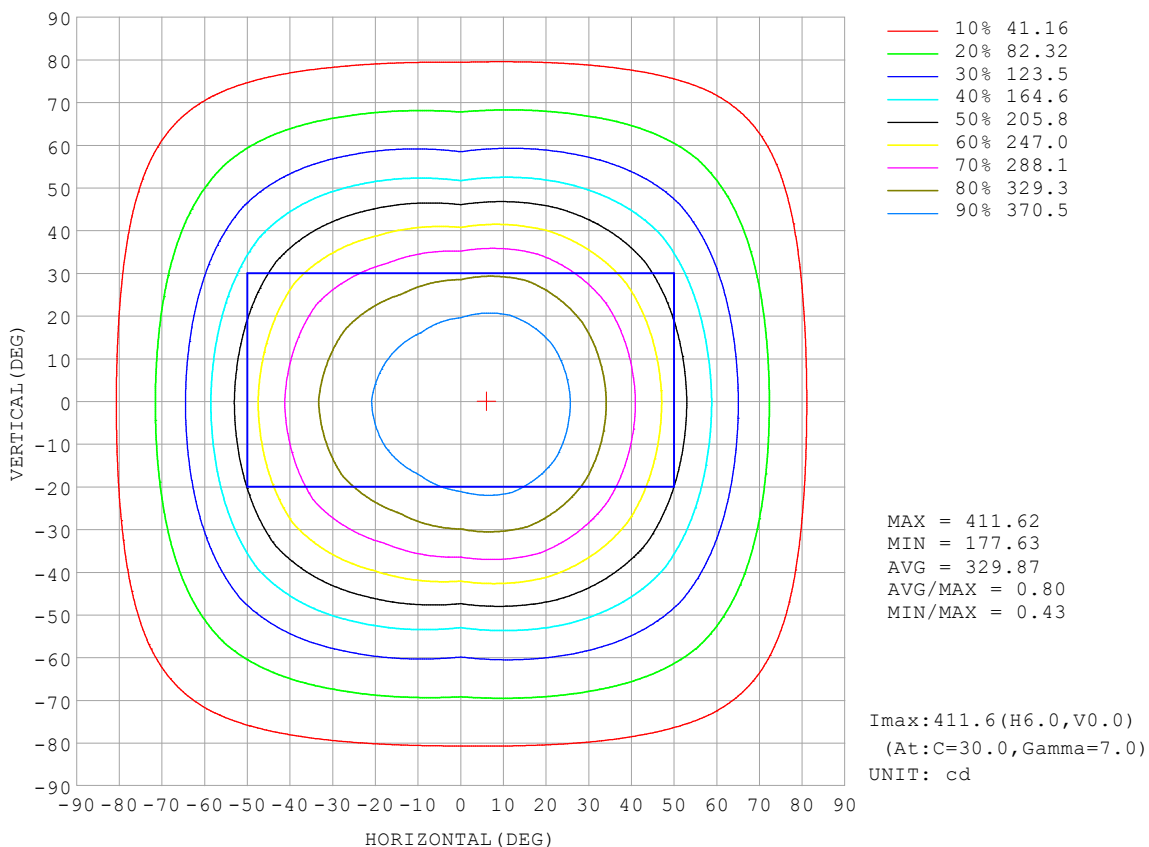
REFLECTANCE										
Ceiling	0.8	0.8	0.8	0.7	0.7	0.7	0.5	0.5	0.5	0
Walls	0.7	0.5	0.3	0.7	0.5	0.3	0.7	0.5	0.3	0
Working plane	0.2	0.2	0.2	0.2	0.2	0.2	0.2	0.2	0.2	0
ROOM INDEX	UTILIZATION FACTORS (PERCENT) $k(RI) \times RCR = 5$									
$k = 0.60$	58	47	40	58	47	40	56	46	40	34
0.80	68	57	50	67	57	50	65	56	49	42
1.00	76	66	59	75	65	58	73	66	58	50
1.25	83	73	66	82	72	66	79	71	65	57
1.50	88	79	72	86	78	71	83	75	70	62
2.00	95	86	80	93	85	79	89	82	77	69
2.50	98	91	85	96	89	84	92	86	82	73
3.00	102	95	89	99	93	88	95	90	86	76
4.00	106	100	95	103	98	94	98	94	90	81
5.00	108	103	99	105	101	97	100	97	94	83
ROOM INDEX	UF (total)									Direct
According to DIN EN 13032-2 2004			Suspended					SHRNOM = 1.25		

C Range: 0 - 360DEG
C Interval: 30.0DEG
Test Speed: HIGH
Temperature: 25.3°C
Operators: Cloud
Test Date: 2024-09-27

γ Range: 0 - 180DEG
 γ Interval: 1.0DEG
Test System: EVERFINE GO-2000B_V1 SYSTEM V2.00.488
Humidity: 65.0%
Test Distance: 6.360m [K=1.0000]
Remarks:

ISOCANDELA DIAGRAM

Test:U:24.000V I:0.4257A P:10.217W PF:1.0000 Freq:0Hz Lamp Flux:1098.66x1 lm		
NAME: SP01-24V-2835-120-3000-80	TYPE:	WEIGHT:
SPEC.:	DIM.: Length=1m	SERIAL No.:
MFR.:	SUR.:	Shielding Angle:

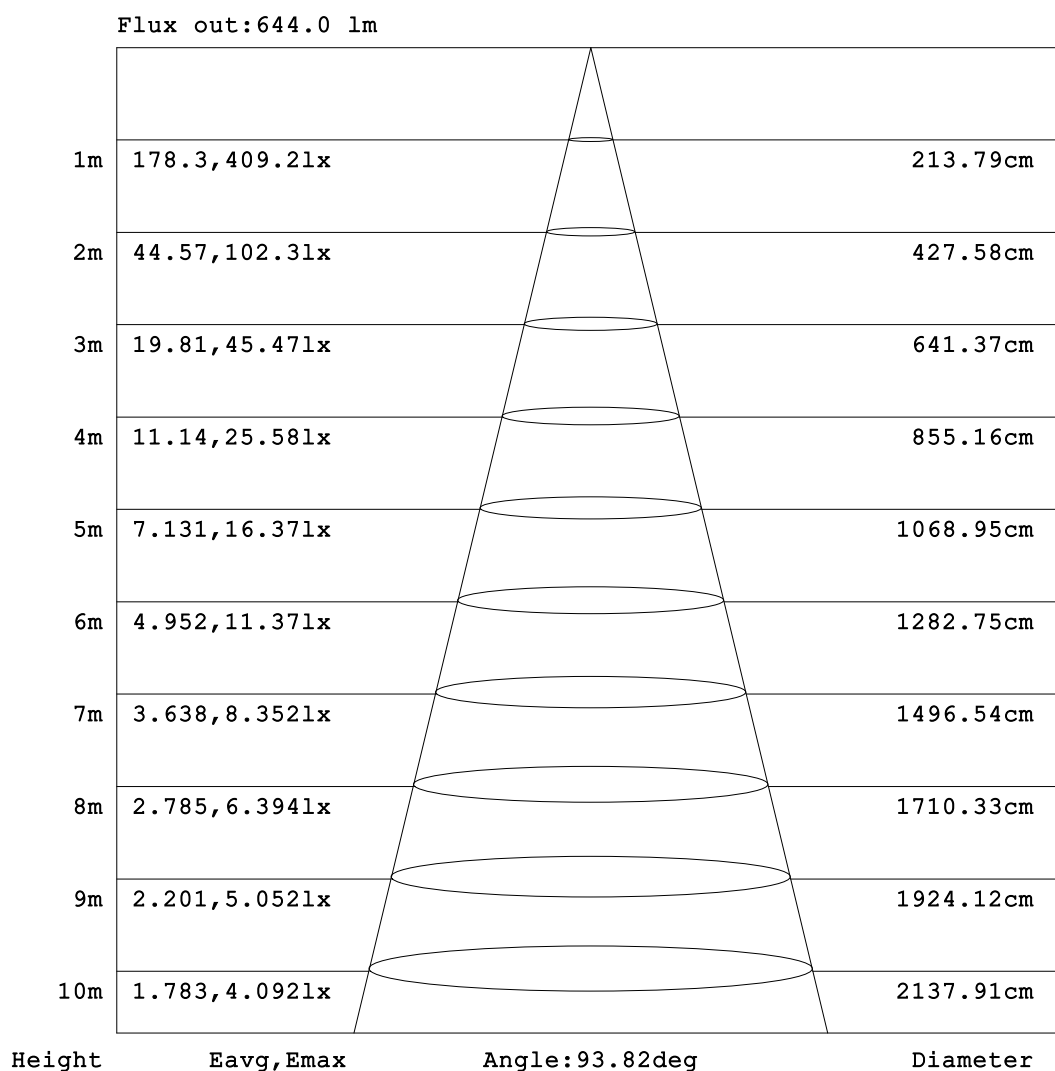


C Range: 0 - 360DEG
C Interval: 30.0DEG
Test Speed: HIGH
Temperature:25.3℃
Operators:Cloud
Test Date:2024-09-27

γ Range: 0 - 180DEG
γ Interval: 1.0DEG
Test System:EVERFINE GO-2000B_V1 SYSTEM V2.00.488
Humidity:65.0%
Test Distance:6.360m [K=1.0000]
Remarks:

AAI Figure

Test:U:24.000V I:0.4257A P:10.217W PF:1.0000 Freq:0Hz Lamp Flux:1098.66x1 lm		
NAME: SP01-24V-2835-120-3000-80	TYPE:	WEIGHT:
SPEC.:	DIM.: Length=1m	SERIAL No.:
MFR.:	SUR.:	Shielding Angle:



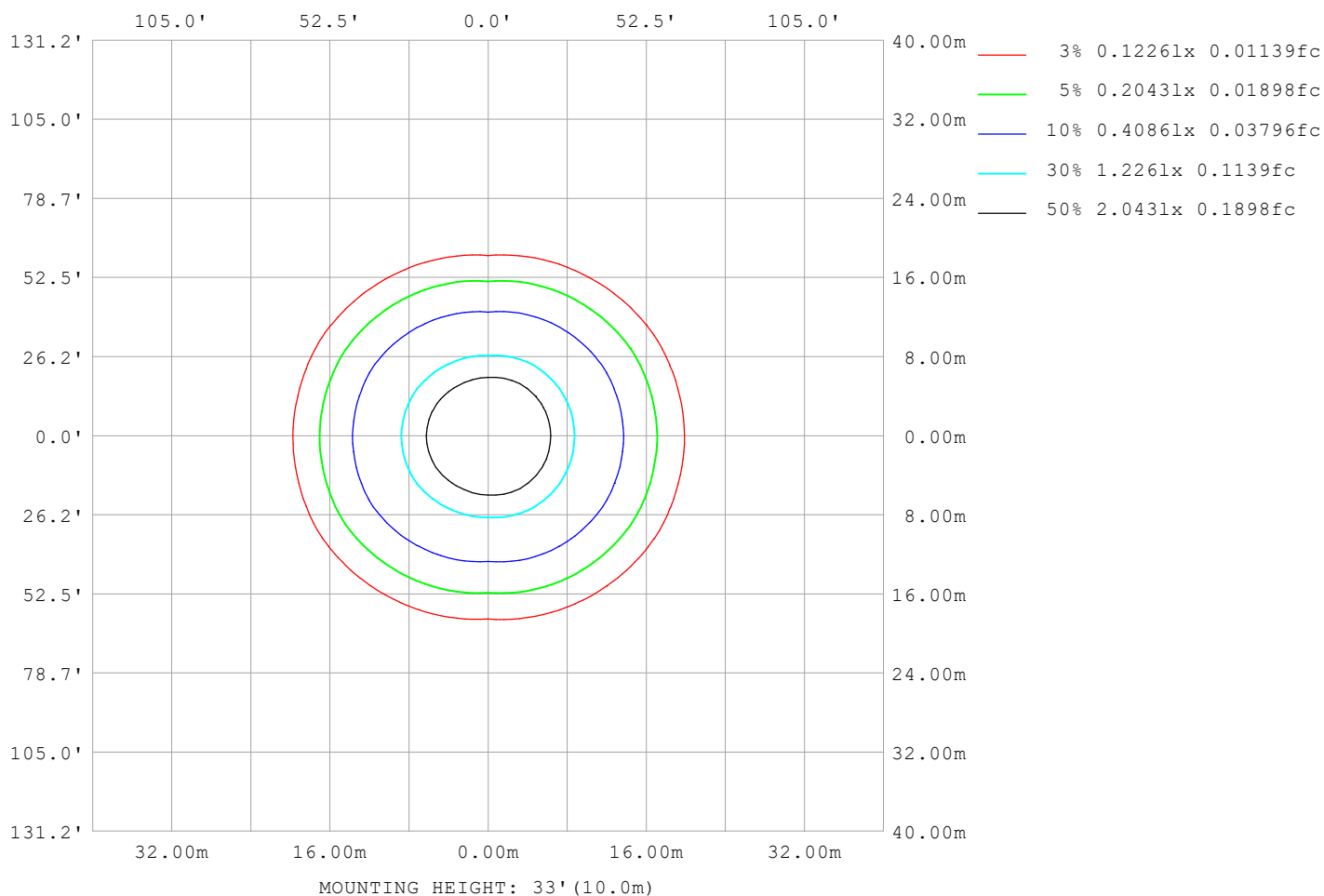
Note:The Curves indicate the illuminated area and the average illumination when the luminaire is at different distance.

C Range: 0 - 360DEG
C Interval: 30.0DEG
Test Speed: HIGH
Temperature:25.3℃
Operators:Cloud
Test Date:2024-09-27

γ Range: 0 - 180DEG
γ Interval: 1.0DEG
Test System:EVERFINE GO-2000B_V1 SYSTEM V2.00.488
Humidity:65.0%
Test Distance:6.360m [K=1.0000]
Remarks:

ISOLUX DIAGRAM

Test:U:24.000V I:0.4257A P:10.217W PF:1.0000 Freq:0Hz Lamp Flux:1098.66x1 lm		
NAME: SP01-24V-2835-120-3000-80	TYPE:	WEIGHT:
SPEC.:	DIM.: Length=1m	SERIAL No.:
MFR.:	SUR.:	Shielding Angle:



C Range: 0 - 360DEG
C Interval: 30.0DEG
Test Speed: HIGH
Temperature:25.3℃
Operators:Cloud
Test Date:2024-09-27

γ Range: 0 - 180DEG
γ Interval: 1.0DEG
Test System:EVERFINE GO-2000B_V1 SYSTEM V2.00.488
Humidity:65.0%
Test Distance:6.360m [K=1.0000]
Remarks:

LED Avg.L Report

Test:U:24.000V I:0.4257A P:10.217W PF:1.0000 Freq:0Hz Lamp Flux:1098.66x1 lm		
NAME: SP01-24V-2835-120-3000-80	TYPE:	WEIGHT:
SPEC.:	DIM.: Length=1m	SERIAL No.:
MFR.:	SUR.:	Shielding Angle:

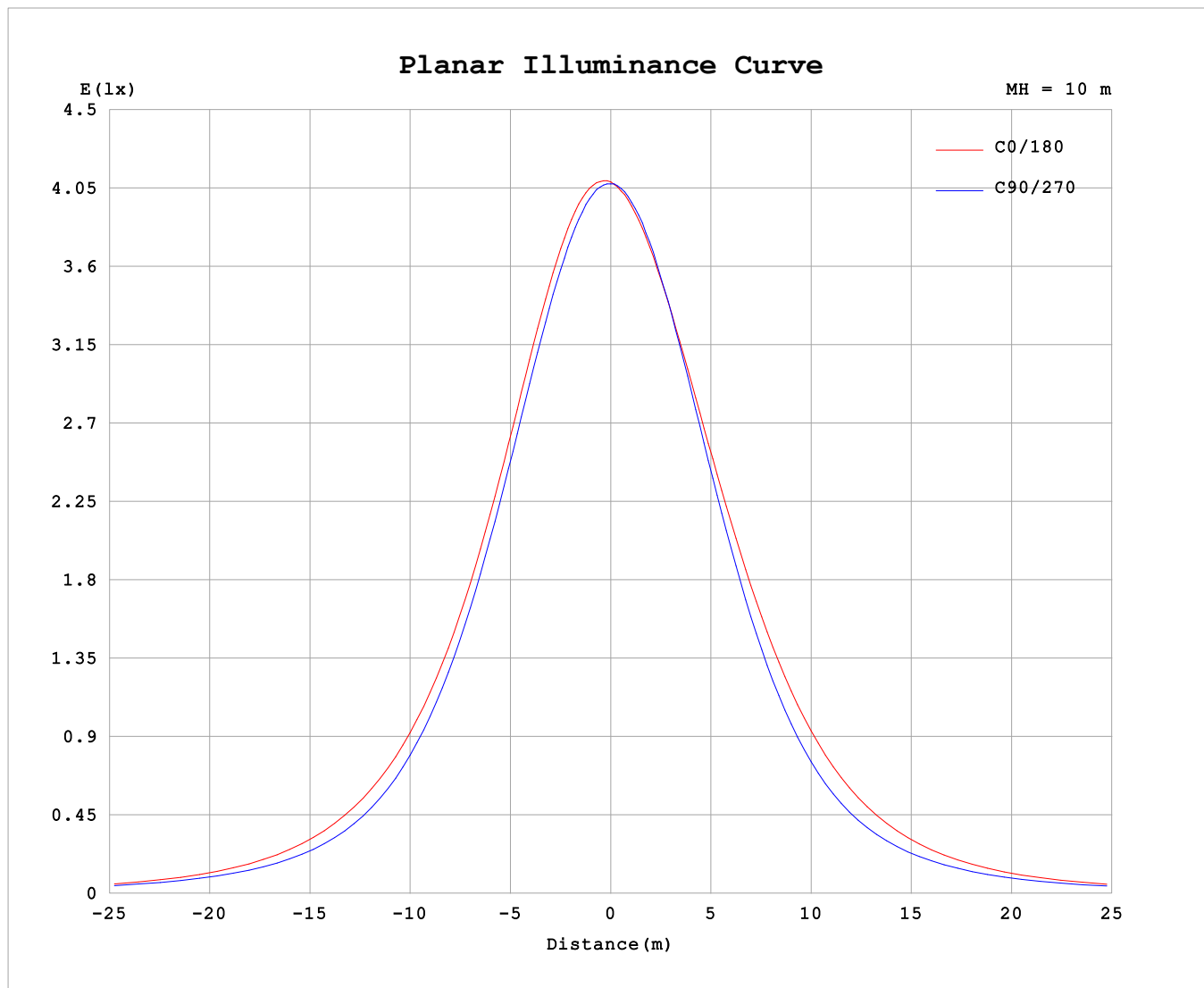
AvgL	cd/m2
L_0~180 (65) av	19226
L_0~180 (75) av	17294
L_0~180 (85) av	18262
L_90~270 (65) av	15195
L_90~270 (75) av	15185
L_90~270 (85) av	17330
L_45 (65) av	17942
L_45 (75) av	16711
L_45 (85) av	18182

Standard: GB/T 29293-2012

C Range: 0 - 360DEG
C Interval: 30.0DEG
Test Speed: HIGH
Temperature:25.3℃
Operators:Cloud
Test Date:2024-09-27

γ Range: 0 - 180DEG
γ Interval: 1.0DEG
Test System:EVERFINE GO-2000B_V1 SYSTEM V2.00.488
Humidity:65.0%
Test Distance:6.360m [K=1.0000]
Remarks:

Planar Illuminance Curve



C Range: 0 - 360DEG
 C Interval: 30.0DEG
 Test Speed: HIGH
 Temperature: 25.3°C
 Operators: Cloud
 Test Date: 2024-09-27

γ Range: 0 - 180DEG
 γ Interval: 1.0DEG
 Test System: EVERFINE GO-2000B_V1 SYSTEM V2.00.488
 Humidity: 65.0%
 Test Distance: 6.360m [K=1.0000]
 Remarks:

LUMINOUS DISTRIBUTION INTENSITY DATA

Test:U:24.000V I:0.4257A P:10.217W PF:1.0000 Freq:0Hz Lamp Flux:1098.66x1 lm		
NAME: SP01-24V-2835-120-3000-80	TYPE:	WEIGHT:
SPEC.:	DIM.: Length=1m	SERIAL No.:
MFR.:	SUR.:	Shielding Angle:

Table--1

UNIT: cd

C (DEG) γ (DEG)	0	30	60	90	120	150	180	210	240	270	300	330							
0	408	408	408	408	408	408	408	408	408	408	408	408							
5	411	411	409	407	404	403	402	402	403	405	408	410							
10	410	409	406	401	397	395	394	393	394	398	403	408							
15	403	403	398	390	385	385	384	382	382	386	395	401							
20	390	391	385	375	370	372	372	369	365	369	382	389							
25	373	373	368	355	351	357	358	353	345	348	363	371							
30	350	351	345	329	328	339	342	335	322	321	340	348							
35	324	324	317	299	301	318	321	314	295	289	310	321							
40	294	294	285	263	272	292	295	288	265	253	277	290							
45	261	260	248	225	239	262	263	257	232	214	240	256							
50	227	225	210	186	204	227	228	222	197	176	202	221							
55	191	189	173	152	169	190	191	185	162	143	165	185							
60	156	155	139	123	137	154	154	149	131	116	132	151							
65	124	123	111	99.3	108	121	120	116	103	93.3	105	119							
70	94.6	94.3	86.4	79.4	84.5	91.5	90.4	88.1	79.9	74.1	81.7	91.7							
75	68.8	69.4	65.4	61.4	63.7	66.8	65.5	63.8	59.5	56.5	61.4	67.3							
80	45.8	47.0	45.8	43.8	44.4	45.3	43.9	42.5	40.3	38.9	42.1	45.1							
85	24.2	25.6	25.7	25.1	25.0	24.7	23.5	22.1	20.9	20.2	22.1	23.6							
90	6.41	6.80	6.42	5.96	6.16	6.87	6.59	5.54	4.38	3.62	4.19	5.39							
95	4.29	4.50	4.79	4.85	4.56	4.42	3.91	3.93	3.92	3.88	3.88	3.82							
100	4.55	4.72	5.02	5.24	4.90	4.73	4.17	4.22	4.24	4.16	4.21	4.13							
105	4.94	5.10	5.40	5.61	5.31	5.11	4.49	4.56	4.59	4.46	4.56	4.47							
110	5.33	5.49	5.79	5.98	5.72	5.50	4.84	4.90	4.95	4.78	4.91	4.82							
115	5.73	5.88	6.17	6.32	6.11	5.90	5.20	5.25	5.30	5.13	5.24	5.17							
120	6.09	6.25	6.52	6.66	6.48	6.27	5.56	5.60	5.63	5.47	5.57	5.50							
125	6.45	6.61	6.86	6.99	6.81	6.63	5.91	5.93	5.97	5.83	5.89	5.84							
130	6.79	6.93	7.17	7.31	7.13	6.96	6.26	6.27	6.31	6.18	6.22	6.18							
135	7.11	7.21	7.45	7.58	7.42	7.28	6.61	6.62	6.64	6.60	6.48	6.51							
140	7.41	7.49	7.70	7.83	7.69	7.58	6.94	6.96	6.98	6.94	6.87	6.84							
145	7.71	7.76	7.92	8.05	7.96	7.86	7.28	7.29	7.33	7.29	7.24	7.18							
150	8.02	8.04	8.15	8.28	8.23	8.17	7.63	7.65	7.68	7.64	7.62	7.51							
155	8.34	8.32	8.41	8.53	8.49	8.46	7.99	8.02	8.05	8.00	7.98	7.92							
160	8.66	8.62	8.67	8.78	8.76	8.75	8.33	8.37	8.40	8.37	8.35	8.29							
165	8.94	8.89	8.92	9.03	8.99	9.00	8.69	8.70	8.77	8.74	8.70	8.65							
170	9.15	9.17	9.15	9.24	9.21	9.21	9.00	9.02	9.07	9.06	9.02	8.97							
175	9.32	9.34	9.32	9.40	9.36	9.36	9.25	9.26	9.30	9.31	9.27	9.21							
180	9.41	9.42	9.43	9.47	9.43	9.41	9.40	9.41	9.42	9.46	9.44	9.39							

C Range: 0 - 360DEG
C Interval: 30.0DEG
Test Speed: HIGH
Temperature:25.3℃
Operators:Cloud
Test Date:2024-09-27

γ Range: 0 - 180DEG
γ Interval: 1.0DEG
Test System:EVERFINE GO-2000B_V1 SYSTEM V2.00.488
Humidity:65.0%
Test Distance:6.360m [K=1.0000]
Remarks: